

VALVES OPENER

VERSATILE, ERGONOMIC, COMPACT



VALIFTER

BY FEDA

Valves Opener is a telescopic stainless steel operating key for turning deeply located gas and water valves.

It is an efficient tool that can be used by one person thanks to its technical and ergonomic features.

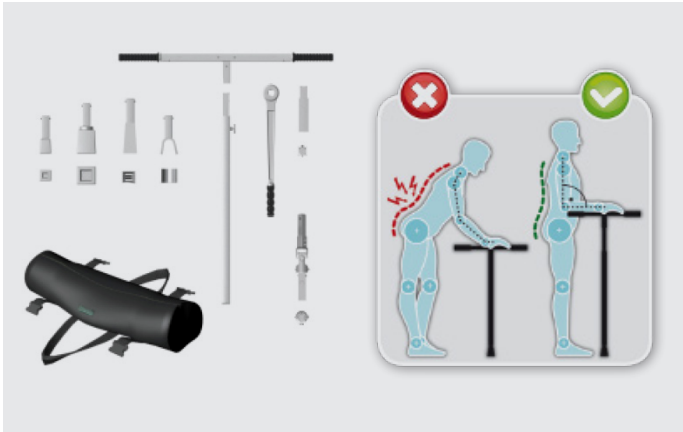
The **Valves Opener** key allows the user to maintain an upright position thanks to the adjustment of the handle and the possibility of attaching an extension.

The Valves Opener has several accessories: the interchangeable sockets allow opening and closing various types of valves, the ratchet can be used as an alternative to the T-handle in tight spaces.



OPERATIONAL SKILLS

MIN/MAX EXTENSION (CM)	CAPACITY (NM)	WEIGHT (KG)
100/150	400	5

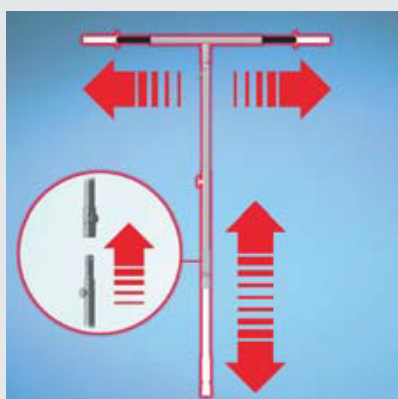


Valves Opener Kit and Accessories

CODE	VALVES OPENER STARTER KIT	CODE PRODUIT UNIQUE
VAL-CMV-K	T-Shaped Telescopic Handle	VAL-CMV-01
	Telescopic Stick Length 1,00-1,50 m	VAL-CMV-02
	Female Socket 27-31 mm	VAL-CMV-03
	Carrying Bag	VAL-CMV-04

VALVES OPENER

CODE	OPTIONAL
VAL-CMV-05	Ratchet spanner with quick coupling
VAL-CMV-06	Swivel joint with quick-release coupling
VAL-CMV-07	Female socket (12/14 mm) for square 12x12, with quick coupling (valves for utility shunts)
VAL-CMV-08	Female socket (14/16 mm) for square 14x14, with quick coupling (valves dn40/50)
VAL-CMV-09	Female socket (17/20 mm) for square 17x17, with quick coupling (valves dn65/80)
VAL-CMV-10	Female socket (19/22 mm) for square 19x19, with quick coupling (valves dn100/150)
VAL-CMV-11	Female socket (24/27 mm) for square 24x24, with quick coupling (valves dn200)
VAL-CMV-12	Female socket (21/24 mm) for square 21x21, with quick-release coupling
VAL-CMV-13	Female socket (32/36 mm) for square 32x32, with quick coupling
VAL-CMV-14	Fork for handwheels, with clutch quick-release coupling
VAL-CMV-C	Bushings according to drawing feasible
-	Bow, triangle and tripod sockets available



T-HANDLE AND ROD

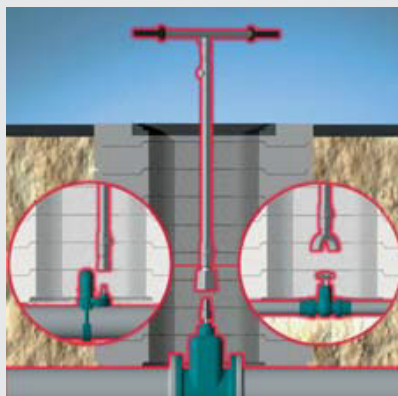
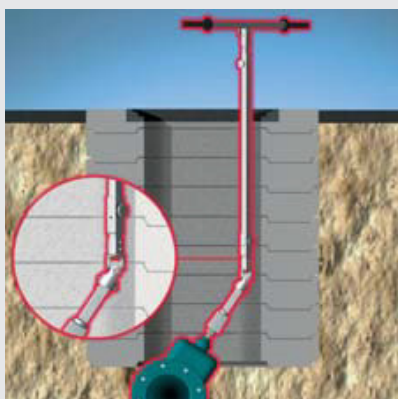
Telescopic handle and rod allow the operator to assume an ergonomically correct position at all times, reducing the risk of injury.

Material: stainless steel

SWIVEL JOINT

The swivel joint, with quick-release couplings at both ends, allows the operation of valves installed at a non-orthogonal position to the pipeline.

Material: stainless steel



INTERCHANGEABLE SLEEVES

A single spanner with a range of interchangeable quick-connect sockets, for each cap or handwheel size.

Materials: stainless steel and galvanised malleable cast iron

RATCHET LEVER

The ratchet lever, used as an alternative to the telescopic 'T' handle, allows the spanner to be used even in precarious situations, such as the presence of vehicles, walls, trees, street lamps in the vicinity of the shaft.

Material: chrome vanadium steel

